



PRODUCT SHOWCASE

Solutions for Working SmarterTM

Optimize Your Workflow!



G1 Powered Mobile Workstation

Part # G1-AT

- ✓ PERFECT FOR:
 - BLUEPRINTING, PRODUCTION & DIAGNOSTICS
- ✓ INCREASED:
 - ACCURACY
 - EFFICIENCY
 - PRODUCTIVITY
- ✓ LOCKS FOR SECURING TECHNOLOGY
- ✓ 3-4 DAYS USE ON A SINGLE CHARGE
- ✓ RUGGED & DURABLE
- ✓ PROUDLY MADE IN USA



- + DESK ON WHEELS
- + LOCKING UPPER BOX
- + DUAL MONITOR CAPABILITIES
- + ADJUSTABLE HEIGHT
- + SLIDE OUT PRINTER TRAY
- + 10" RUN FLAT CASTERS

866.694.2278

TECH SHEET: G1



Power System
(Included with ALL Models)
45 Amp / 3 Phase Charger
DC to AC Inverter
Fuses, Power Block, Kill Switch

Available Accessories:



SIDE SHELF
Part # G1A-SS

Accessory Kit
Part # G1A-ACC



SPECIFICATIONS

Dimensions (L x W x H)	27" x 21" x 69"
Weight	210 lbs
Color	Red
Assembly Type	Minor
Printer Compartment Dimensions	9.5" x 21.25" x 19"
Top Clamshell Dimensions	27" x 19.5" x 4.75"

* Batteries Not Included

Available Versions:

Part #G1-A: Base Model

Part #G1-AT: Fully Loaded
(Laptop)

Part #G1-ATT: Touch Version
(Tablet)

Solutions for Working Smarter™



TGO-DC2 "ADAS" Mobile Workstation

Part # TGO-DC2-L

- ☞ TRI-SCREEN POWERED MOBILE WORKSTATION
- ☞ PERFECT FOR:
-"ADAS" CALIBRATION & SCANNING
- ☞ ALL NECESSARY EQUIPMENT CAN BE MOUNTED OR STORED FOR A TRULY MOBILE SOLUTION
- ☞ 4 DAYS OF USE ON A SINGLE CHARGE
- ☞ PROUDLY MADE IN USA 



- + STORES SCANNERS & POWER CONDITIONER
- + LOCKABLE COMPARTMENTS
- + ADJUSTABLE SCANNER CUBBIES
- + STORAGE FOR CALIBRATION WEIGHTS
- + RUGGED 6" RUN FLAT TIRES
- + SLIDE OUT PRINTER TRAY

866.694.2278

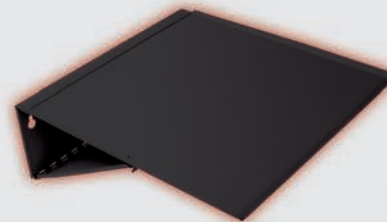
Optional Accessories:



Large Monitor Mount
Holds up to a 55" Monitor
*Monitor not Included
Part #TGO-DC2-MML



Battery Maintainer
75/100/120 Amp
3 Phase Charger
Sufficient, Consistent
Voltage for Scanning



Side Shelf
Part #TGO-DC2-SS

SPECIFICATIONS

Dimensions (L x W x H)	21.25" x 48.5" x 69.75"
Weight	200 lbs
Color	Black
Assembly Type	Minor
Printer Compartment Dimensions	9.375" x 26.5" x 18.5"

*Batteries Not Included

Available Versions:

Part #TGO-DC2:
Base Model

Part #TGO-DC2-L:
Laptop Version

Part #TGO-DC2-T:
Tablet Version

Solutions for Working Smarter™



L1 Laptop Locker

Part # L1-A
Wall Mounted Cabinet



Keyless Entry System

Part # L1-ASP
Mobile Workstation



- + ELECTRONIC KEYPAD LOCK
- + FITS TABLETS AND LAPTOPS 17" OR SMALLER
- + ELASTIC STRAPS SECURE LAPTOP IN PLACE
- + CUSHIONED PLATFORM WHERE LAPTOP SITS
- + TABLET ADAPTOR ACCESSORY AVAILABLE

Available Accessories:

Optional Printer Shelf



Tablet Adaptor: Part # L1A-TA



Available Configurations:

- L1-AS:** L1-A with Stand
- L1-ASP:** L1-A with Stand and Printer Shelf



CK Customer Check-In Kiosks



Perfect for CCC's New
Engage Module

Kiosks

Part # CK-100
Floor Stand

Part # CK-101
Counter Top



Holes for
Securing to Counter

- + SECURITY BRACKET FITS MOST TABLETS
- + TABLET SECURITY - EASY TO LOCK & DEPLOY
- + BRANDED - ADD GRAPHICS FOR CUSTOMIZATION *
- + BACK WHEELS FOR MOBILITY - (PART #CK-100)
- + DIMENSIONS: 48" x 16 1/4" x 14 11/32"

* Tablet and Branding not included

Solutions for Working Smarter™

866.694.2278

6

GOLIATHCARTS.com



PR1 Parts Cart

- + CONTROL YOUR PARTS WORKFLOW
- + FOLDING SHELVES AND BUMPER STANDS
- + CARTS NEST FOR EASY STORAGE
- + FINE MESH KEEPS SMALL PARTS FROM DISAPPEARING
- + HIGH QUALITY POLYURETHANE WHEELS
- + DIMENSIONS: 46" x 24" x 69"



Part # PR1-XPC



Part # PR1-A

Available Accessories:

*** Fully Loaded (#PR1-XPC)**
Includes Panel Cart & RO Holder

RO Holder:

Part # PR1-RO
-Whiteboard with
RO Sleeve
-Hangs on Cart



Panel Cart:

Part # PR1-PC
-Attaches to Cart
-Stores Large Panels

* Available as Stand-
Alone Unit
Part # PR1-PCSA





BP Bumper Stands

- + HOLDS (8) BUMPERS; MESH STORAGE SHELF
- + ARMS ADJUSTABLE IN 4" INCREMENTS
- + DIMENSIONS: 40"W X 84"H X 32"D
- + SWIVEL LOCKING CASTERS

Part # BP-Wall
Wall Mounted



- + (4) UPRIGHTS AND (12) CUSHIONED ARMS
- HOLDS 6 BUMPERS
- + ARMS FOLD FOR EASY STORAGE
- + DIMENSIONS: 44"H X 26"D
- + BOLTS TO WALL (BOLTS NOT INCLUDED)

Part # BP-Roll
Mobile Rolling



Solutions for Working Smarter™



UD Uni-Dolly - Car Dollies

Part # UD4800-A
4800 lb. Capacity



Part # UD9600-A
9600 lb. Capacity

* Consists of (2) UD4800 Dollies with
(1) Connection Kit

- + MOVE VEHICLES SAFELY AND EFFICIENTLY
 - EASILY MOVE UNDRIVEABLE VEHICLES
- + ADAPTORS PIVOT FOR FRAME RACKS & TOW TRUCKS
- + SAFER THAN FLOOR JACKS
- + HEAVY DUTY STEEL FRAME, DURABLE POWDER COAT FINISH
- + ADJUSTABLE HEIGHT (14"-21.5") AND WIDTH (30"-60")
- + PRECISION BEARING SWIVEL CASTERS

ACCESSORIES: Uni-Dolly

Quick Release Adaptors:



Pinch Weld

Part #UD-4800-PC



Hub

Part #UD-4800-HA



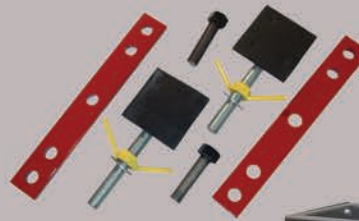
Frame

Part #UD-4800-FA

Connection Kit

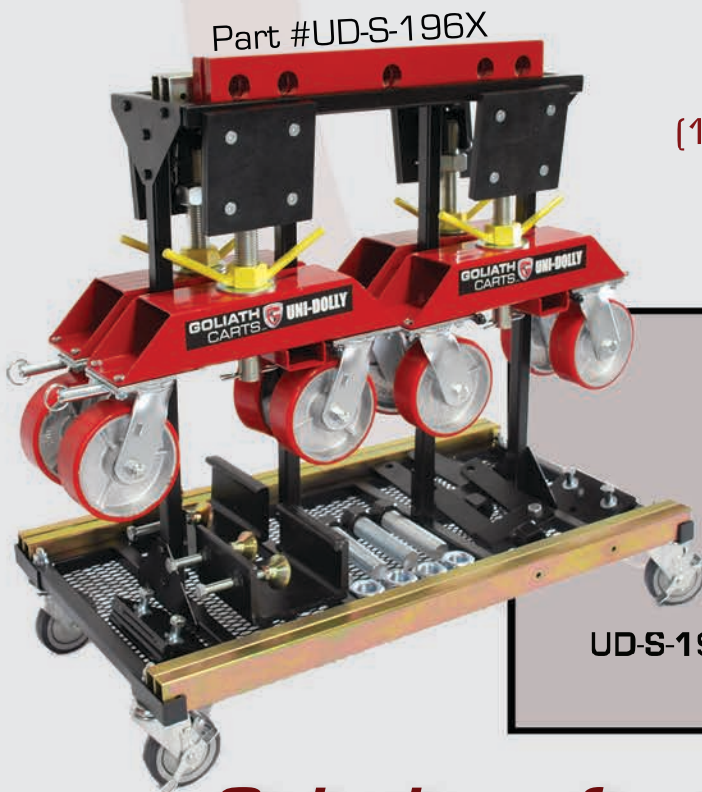
Part #UD-4800-CK

* Joins (2) Dollies
Together



Engine Kit

Part #UD-4800-EK



Part #UD-S-196X

Dolly Stand

Part #UD-Stand

* Holds (2) UD4800 or
(1) UD9600 with Accessories



Available Packages:

UD-S-148: Stand with (1) UD4800 Dolly

UD-S-248: Stand with (2) UD4800 Dollies

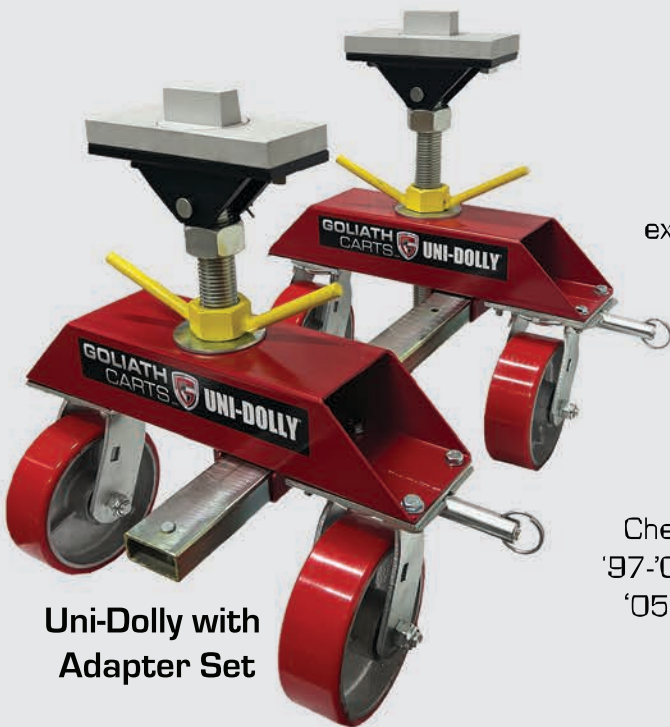
UD-S-196: Stand with (1) 9600 Dolly

UD-S-196X: Stand with (1) UD9600 Dolly with Pinch Clamp,
Frame, and Hub Adaptors

Solutions for Working Smarter™

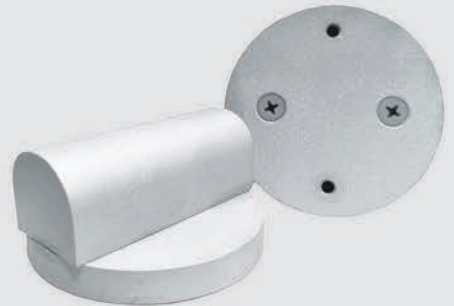


UD Uni-Dolly - Specialty Adapters



Uni-Dolly with
Adapter Set

AUDI
#UD-4800-AUD
Audi TT, RS, R8, A6, A7



BMW
#UD-4800-BMW
All Models 2001-Present
except Mini R60 Countryman



CORVETTE
#UD-4800-COR
Chevy Corvette C5, C6, C7, GS Z
'97-'04; Z06 Corvette, z51, C6-Z06
'05-'12; C6 Coupe & Convertible
'14+: C7 Stingray



- + MOVE LUXURY VEHICLES SAFELY & EFFECTIVELY
- + DESIGNED TO SECURE AUDI, BMW, CORVETTE,
MERCEDES, PORSCHE & TESLA VEHICLES
- + PROVIDE MAXIMUM CONTROL AND SECURITY
- + RUGGED DESIGN, HIGH STRENGTH 6061 ALUMINUM
- + FITS MOST MODELS

UD Uni-Dolly - Specialty Adapters

PORSCHE

#UD-4800-POR

Boxster and Cayman 911, 964,
993, 996, 997, 991



TESLA

#UD-4800-TES

Model 3, Model S,
Model X, Model Y



MERCEDES

#UD-4800-MER

'00-Present: AMG, CLA, E, GLA, C,
G, S, SLK, SLK, GT, GL, GLE, GLK,
ML Classes



Available Versions:

Mix and Match:

Purchase Individually or in Sets



UD-4800-UNIV

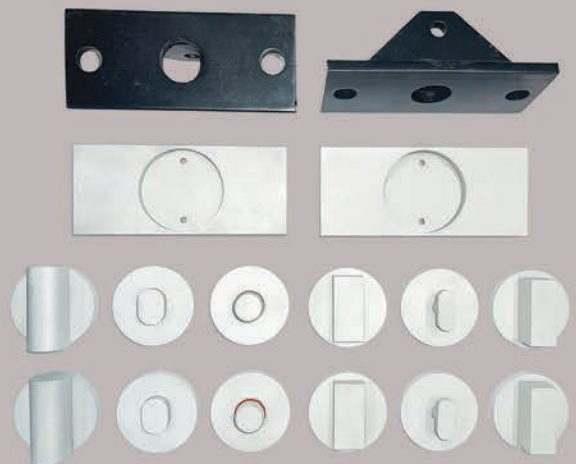
Universal Adapter

UD-4800-CAR

Adapter Mount

Full Set:

Includes all (6) adapters,
UD-4800-CAR & UD-4800-UNIV





P1 Painter's Prep Cart



Accessories Included:

Part #: P1-BP
Continuous Roll Dispenser

- PERFECT FOR:
 - MANAGING & CONTROLLING INVENTORY
 - POINT-OF-USE PREP CART SOLUTION

Part # P1-A

- LOCKING TOOL AND MATERIAL STORAGE

- HOLDS 6", 12", 18", & 36" ROLLS

- STORES AND SECURES ALL PAINT PREP MATERIALS

- PAPER TREE, MATERIAL CART & TOOL CART ALL IN ONE


- FRONT PANEL OPENS TO CHANGE PAPER. CLOSSES TO KEEP PAPER CLEAN

- PROUDLY MADE IN USA 





D1 Mobile Detailer Cart

- ☞ CONTROLS AND STREAMLINES THE DETAIL DEPARTMENT WORKFLOW
- ☞ LOCKING TOOL AND MATERIAL STORAGE
- ☞ MINIMIZES CROSS CONTAMINATION
- ☞ GIVES SHOP MOBILITY & CONTROL OF RESOURCES
- ☞ DIMENSIONS: 88" X 22" X 63"
- ☞ PROUDLY MADE IN USA 

Part # D1-A



STORES THE FOLLOWING:

- + INTERIOR/EXTERIOR PRODUCTS
- + LARGE FORMAT DETAILING MATERIALS
- + SEAT COVERS
- + BUFFER PADS
- + MICROFIBER CLOTHS
- + BUFFERS & TOOLS



PG1 Paint Gun Locker



KEYLESS ENTRY WITH
KEY OVERRIDE

- KEYLESS ENTRY PAINT GUN LOCKER
- SAFELY STORES UP TO 24 PAINT GUNS
- STORAGE FOR PERSONAL ITEMS
- PADDED TO PROTECT EQUIPMENT
- MOUNTS ON WALL OR SIDE
OF P1 PAINTER'S TOOLBOX
- DIMENSIONS: 33"H X 22"W X 15"D



Part # PG1-A



Optional Accessories:

Magnetic Paint Gun Holder:

Part #PG1-MG

Holds up to 5 paint guns





K1 Key Locker

Part # K1-A

- ❑ KEYLESS ENTRY - KEY STORAGE LOCKER
- ❑ STORE AND CONTROL CUSTOMER KEY ACCESS
- ❑ SAFELY STORES UP TO 120 CUSTOMER KEYS
- ❑ STORAGE FOR PERSONAL ITEMS
- ❑ WALL MOUNTABLE
- ❑ DIMENSIONS: 30"H X 20"W X 3"D



KEYLESS ENTRY WITH
KEY OVERRIDE

866.694.2278

16

GOLIATHCARTS.com



GOLIATH
CARTS

TL1-A Tool Locker

STORES:

- CORDLESS TOOLS
- AIR TOOLS



KEYLESS ENTRY WITH
KEY OVERRIDE



- + LOCKING MECHANISM FOR AIR TOOLS
- + INTERCHANGEABLE SHELVING
- + HAS ADMINISTRATOR & USER PASSWORD
- + CAN BE USED IN WALL MOUNTED
OR STANDING POSITION
- + DIMENSIONS: 33"H x 22"W x 15"D



Part # TL1-A
Tool Locker



PERFECT FOR:
-INVENTORY MANAGEMENT/CONTROL
-INCREASE INVENTORY VISIBILITY

REDUCE SPEND & IMPROVE ACCOUNTING

PROUDLY MADE IN USA 



Part #IC-LC2

- + EFFECTIVE LEAN INVENTORY MANAGEMENT
- + INTEGRATED LED LIGHTING
- + DIMENSIONS: L24" x W36" x H78"
- Acro-Bins NOT Included

*CUSTOM BUILD ONLY

IC Inventory Control Solutions

AUDIT CAPABLE LOCK



Part #IC-MC2

- + MOBILIZE YOUR INVENTORY SYSTEM
- + DIMENSIONS: L24" x W36" x H42"
- Acro-Bins NOT Included

LC2 and MC2 Available Accessories:

Bluetooth Box

Part # IC-BTB

Optional Bluetooth Controller &
Cables for Lock Interface



Auxiliary Power Box

Part # IC-AUX

Optional: To Power Mobile Inventory
Control Cabinet





**Request A
Free Quote:**



Contact Info:

Goliath Carts, LLC
PO Box 891210
Temecula, CA 92589-1210

Toll Free: 866.694.2278
www.GOLIATHCARTS.com
info@goliathcarts.com

Productivity

Increase productivity, accuracy, and efficiency throughout your departments with our expertly designed carts. We build best in class "point of use" carts and solutions!

Mobility

Eliminate wasted movement in your shop! Streamline your departments by giving your techs 95 % of their tools and materials right where they need them in a truly mobile solution.

Control

We believe in a "closed system." If you can't lock it you can't control it! Our carts allow you to control access to valuable equipment and materials. Increase accountability and manage inventory!

Common Uses:

Mobile Estimating
ADAS
Blueprinting
Vehicle Dollies
Paint Prep Management
Parts Management
Inventory Control
Point of Use Carts
Secure Series Cabinets

***At Goliath Carts we are
Committed to Developing
Products that Help you
Improve!***

INDUSTRIES SERVED:

Our products transcend a variety of vertical markets. Look for Goliath products in Aerospace, Military, Industrial, Gas & Oil, Manufacturing, Mining, and other industries that require rugged, durable products!



**ACCREDITED
BUSINESS**

BBB Rating: A+