



*PRODUCT SHOWCASE*

*Solutions for Working Smarter<sup>TM</sup>*

*Optimize Your Workflow!*



# G1 Powered Mobile Workstation

Part # G1-AT

- ✓ PERFECT FOR:
  - BLUEPRINTING, PRODUCTION & DIAGNOSTICS
- ✓ INCREASED:
  - ACCURACY
  - EFFICIENCY
  - PRODUCTIVITY
- ✓ LOCKS FOR SECURING TECHNOLOGY
- ✓ 3-4 DAYS USE ON A SINGLE CHARGE
- ✓ RUGGED & DURABLE
- ✓ PROUDLY MADE IN USA



- + DESK ON WHEELS
- + LOCKING UPPER BOX
- + DUAL MONITOR CAPABILITIES
- + ADJUSTABLE HEIGHT
- + SLIDE OUT PRINTER TRAY
- + 10" RUN FLAT CASTERS

866.694.2278

## TECH SHEET: G1



**Power System**  
(Included with ALL Models)  
45 Amp / 3 Phase Charger  
DC to AC Inverter  
Fuses, Power Block, Kill Switch

### Available Accessories:



**SIDE SHELF**  
Part # G1A-SS

**Accessory Kit**  
Part # G1A-ACC



### SPECIFICATIONS

Dimensions [L x W x H]	27" x 21" x 69"
Weight	210 lbs
Color	Red
Assembly Type	Minor
Printer Compartment Dimensions	9.5" x 21.25" x 19"
Top Clamshell Dimensions	27" x 19.5" x 4.75"

\* Batteries Not Included

### Available Versions:

Part #G1-A: Base Model

Part #G1-AT: Fully Loaded  
(Laptop)

Part #G1-ATT: Touch Version  
(Tablet)


*Solutions for Working Smarter™*





# TGO-DC2 "ADAS" Mobile Workstation

Part # TGO-DC2-L

- ☐ TRI-SCREEN POWERED MOBILE WORKSTATION
- ☐ PERFECT FOR:  
-"ADAS" CALIBRATION & SCANNING
- ☐ ALL NECESSARY EQUIPMENT CAN BE MOUNTED OR STORED FOR A TRULY MOBILE SOLUTION
- ☐ 4 DAYS OF USE ON A SINGLE CHARGE
- ☐ PROUDLY MADE IN USA 



- + STORES SCANNERS & POWER CONDITIONER
- + LOCKABLE COMPARTMENTS
- + ADJUSTABLE SCANNER CUBBIES
- + STORAGE FOR CALIBRATION WEIGHTS
- + RUGGED 6" RUN FLAT TIRES
- + SLIDE OUT PRINTER TRAY

866.694.2278

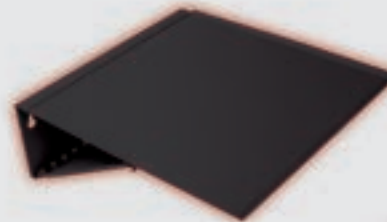
## Optional Accessories:



**Large Monitor Mount**  
Holds up to a 55" Monitor  
*\*Monitor not Included*  
Part #TGO-DC2-MML



**Battery Maintainer**  
75/100/120 Amp  
3 Phase Charger  
Sufficient, Consistent  
Voltage for Scanning



**Side Shelf**  
Part #TGO-DC2-SS

## SPECIFICATIONS

Dimensions (L x W x H)	21.25" x 48.5" x 69.75"
Weight	200 lbs
Color	Black
Assembly Type	Minor
Printer Compartment Dimensions	9.375" x 26.5" x 18.5"

*\*Batteries Not Included*

## Available Versions:

Part #TGO-DC2:  
Base Model

Part #TGO-DC2-L:  
Laptop Version

Part #TGO-DC2-T:  
Tablet Version

# *Solutions for Working Smarter™*



## L1 Laptop Locker

Part # L1-A  
Wall Mounted Cabinet



Keyless Entry System

Part # L1-ASP  
Mobile Workstation



- + ELECTRONIC KEYPAD LOCK
- + FITS TABLETS AND LAPTOPS 17" OR SMALLER
- + ELASTIC STRAPS SECURE LAPTOP IN PLACE
- + CUSHIONED PLATFORM WHERE LAPTOP SITS
- + TABLET ADAPTOR ACCESSORY AVAILABLE

### Available Accessories:

#### Optional Printer Shelf



#### Tablet Adaptor: Part # L1A-TA



#### Also Available - Branded Tablet Security Kiosks: Part #CK-100

### Available Configurations:

- L1-AS: L1-A with Stand
- L1-ASP: L1-A with Stand  
and Printer Shelf



# GOLIATH CARTS

## GWS Weld Stand

**\* For Destructive Weld Testing**

Part # GWS-B1  
Mobile Stand

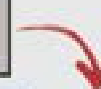
**INCLUDES:**

- + SHELF
- + WELD GUN HOLDER
- + WELDING PLIER HOLDER
- + WET/DRY BUCKET
- + WHITE BOARD
- + METAL THICKNESS GAUGE

Part #GWS-FL1  
Floor Stand



Coupon  
Holder



- + AVAILABLE IN FLOOR MOUNT AND MOBILE VERSIONS
- + SUPPORTS ALL TYPES OF WELDS AND POSITIONS
- + DIMENSIONS: 27" L x 18" W x 87" H

*Solutions for Working Smarter™*

866.694.2278

6

GOLIATHCARTS.com





## PR1 Parts Cart

- + CONTROL YOUR PARTS WORKFLOW
- + FOLDING SHELVES AND BUMPER STANDS
- + CARTS NEST FOR EASY STORAGE
- + FINE MESH KEEPS SMALL PARTS FROM DISAPPEARING
- + HIGH QUALITY POLYURETHANE WHEELS
- + DIMENSIONS: 46" x 24" x 69"



Part # PR1-XPC



Part # PR1-A

### Available Accessories:

**\* Fully Loaded (#PR1-XPC)**  
Includes Panel Cart & RO Holder

#### RO Holder:

Part # PR1-RO  
-Whiteboard with  
RO Sleeve  
-Hangs on Cart



#### Panel Cart:

Part # PR1-PC  
-Attaches to Cart  
-Stores Large Panels

\* Available as Stand-  
Alone Unit  
Part # PR1-PCSA







## BP Bumper Stands

- + HOLDS (8) BUMPERS; MESH STORAGE SHELF
- + ARMS ADJUSTABLE IN 4" INCREMENTS
- + DIMENSIONS: 40"W X 84"H X 32"D
- + SWIVEL LOCKING CASTERS

Part # BP-Roll  
Mobile Rolling



Part # BP-Wall  
Wall Mounted



- + [4] UPRIGHTS AND [12] CUSHIONED ARMS
- HOLDS 6 BUMPERS
- + ARMS FOLD FOR EASY STORAGE
- + DIMENSIONS: 44"H X 26"D
- + BOLTS TO WALL (BOLTS NOT INCLUDED)

*Solutions for Working Smarter™*



**UD** Uni-Dolly - Car Dollies

**Part # UD4800-A**  
4800 lb. Capacity



**Part # UD9600-A**  
9600 lb. Capacity

\* Consists of (2) UD4800 Dollies with  
(1) Connection Kit

- + MOVE VEHICLES SAFELY AND EFFICIENTLY
- EASILY MOVE UNDRIVEABLE VEHICLES
- + ADAPTORS PIVOT FOR FRAME RACKS & TOW TRUCKS
- + SAFER THAN FLOOR JACKS
- + HEAVY DUTY STEEL FRAME, DURABLE POWDER COAT FINISH
- + ADJUSTABLE HEIGHT (14"-21.5") AND WIDTH (30"-60")
- + PRECISION BEARING SWIVEL CASTERS

866.694.2278



## ACCESSORIES: Uni-Dolly

### Quick Release Adaptors:



Pinch Weld

Part #UD-4800-PC



Hub

Part #UD-4800-HA



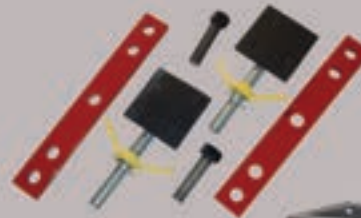
Frame

Part #UD-4800-FA

### Connection Kit

Part #UD-4800-CK

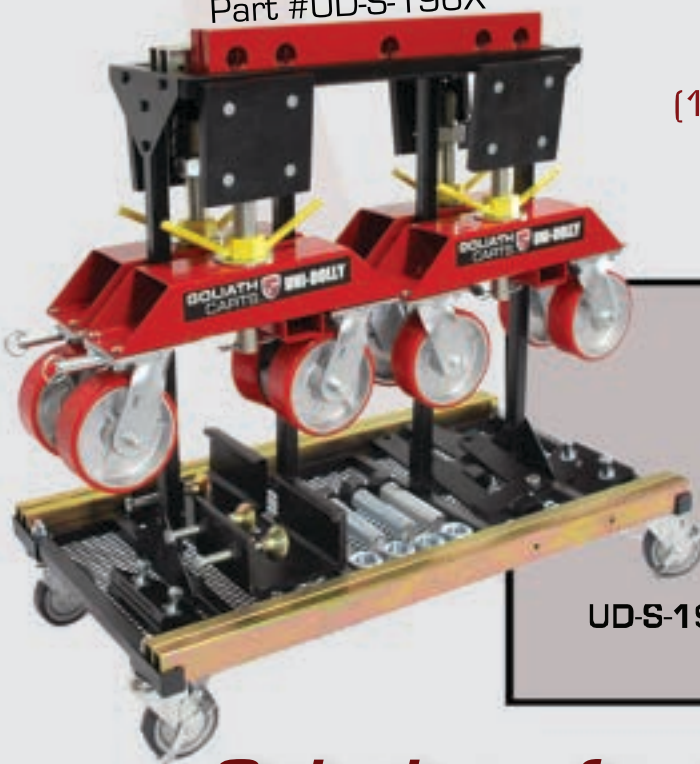
\* Joins (2) Dollies  
Together



### Engine Kit

Part #UD-4800-EK

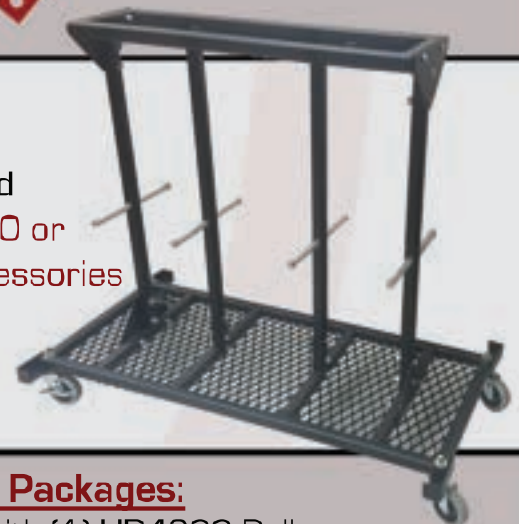
Part #UD-S-196X



### Dolly Stand

Part #UD-Stand

\* Holds (2) UD4800 or  
(1) UD9600 with Accessories



### Available Packages:

**UD-S-148:** Stand with (1) UD4800 Dolly

**UD-S-248:** Stand with (2) UD4800 Dollies

**UD-S-196:** Stand with (1) 9600 Dolly

**UD-S-196X:** Stand with (1) UD9600 Dolly with Pinch Clamp,  
Frame, and Hub Adaptors

***Solutions for Working Smarter™***





## UD Uni-Dolly - Specialty Adapters



Uni-Dolly with  
Adapter Set

**AUDI**  
**#UD-4800-AUD**  
Audi TT, RS, R8, A6, A7



**BMW**  
**#UD-4800-BMW**  
All Models 2001-Present  
except Mini R60 Countryman



**CORVETTE**  
**#UD-4800-COR**  
Chevy Corvette C5, C6, C7, GS Z  
'97-'04; Z06 Corvette, z51, C6-Z06  
'05-'12; C6 Coupe & Convertible  
'14+: C7 Stingray



- + MOVE LUXURY VEHICLES SAFELY & EFFECTIVELY
- + DESIGNED TO SECURE AUDI, BMW, CORVETTE,  
MERCEDES, PORSCHE & TESLA VEHICLES
- + PROVIDE MAXIMUM CONTROL AND SECURITY
- + RUGGED DESIGN, HIGH STRENGTH 6061 ALUMINUM
- + FITS MOST MODELS

## UD

**#UD-4800-POR**

Boxster and Cayman 911, 964,  
993, 996, 997, 991

## #UD-4800-TES

Model 3, Model S,  
Model X, Model Y



**#UD-4800-MER**

ML Classes



### Available Versions:

### Mix and Match:

## Purchase Individually or in Sets



## Universal Adapter

## Universal Adapter



## Adapter Mount

## Adapter Mount



**AUDI**



**PORSCHE**



**TESLA**



**BMW**



## CORVETTE

**MERCEDES**

### Full Set:

Includes all (6) adapters,  
UD-4800-CAR & UD-4800-UNIV







## P1 Painter's Prep Cart



### Accessories Included:

Part #: P1-BP  
Continuous Roll Dispenser

- PERFECT FOR:
  - MANAGING & CONTROLLING INVENTORY
  - POINT-OF-USE PREP CART SOLUTION

Part # P1-A

- LOCKING TOOL AND MATERIAL STORAGE

- HOLDS 6", 12", 18", & 36" ROLLS

- STORES AND SECURES ALL PAINT PREP MATERIALS

- PAPER TREE, MATERIAL CART & TOOL CART ALL IN ONE

- FRONT PANEL OPENS TO CHANGE PAPER. CLOSSES TO KEEP PAPER CLEAN


- PROUDLY MADE IN USA 







## D1 Mobile Detailer Cart

- CONTROLS AND STREAMLINES THE DETAIL DEPARTMENT WORKFLOW
- LOCKING TOOL AND MATERIAL STORAGE
- MINIMIZES CROSS CONTAMINATION
- GIVES SHOP MOBILITY & CONTROL OF RESOURCES
- DIMENSIONS: 88" X 22" X 63"
- PROUDLY MADE IN USA 

Part # D1-A



### STORES THE FOLLOWING:

- + INTERIOR/EXTERIOR PRODUCTS
- + LARGE FORMAT DETAILING MATERIALS
- + SEAT COVERS
- + BUFFER PADS
- + MICROFIBER CLOTHS
- + BUFFERS & TOOLS



## PG1 Paint Gun Locker



KEYLESS ENTRY WITH  
KEY OVERRIDE

- KEYLESS ENTRY PAINT GUN LOCKER
- SAFELY STORES UP TO 24 PAINT GUNS
- STORAGE FOR PERSONAL ITEMS
- PADDED TO PROTECT EQUIPMENT
- MOUNTS ON WALL OR SIDE  
OF P1 PAINTER'S TOOLBOX
- DIMENSIONS: 33"H X 22"W X 15"D



Part # PG1-A



### Optional Accessories:

#### Magnetic Paint Gun Holder:

Part #PG1-MG

Holds up to 5 paint guns







## K1 Key Locker

Part # K1-A

- ❑ KEYLESS ENTRY - KEY STORAGE LOCKER
- ❑ STORE AND CONTROL CUSTOMER KEY ACCESS
- ❑ SAFELY STORES UP TO 120 CUSTOMER KEYS
- ❑ STORAGE FOR PERSONAL ITEMS
- ❑ WALL MOUNTABLE
- ❑ DIMENSIONS: 30"H X 20"W X 3"D



KEYLESS ENTRY WITH  
KEY OVERRIDE





**GOLIATH**  
CARTS

## TL1-A Tool Locker

### STORES:

- CORDLESS TOOLS
- AIR TOOLS



KEYLESS ENTRY WITH  
KEY OVERRIDE



- + LOCKING MECHANISM FOR AIR TOOLS
- + INTERCHANGEABLE SHELVING
- + HAS ADMINISTRATOR & USER PASSWORD
- + CAN BE USED IN WALL MOUNTED  
OR STANDING POSITION
- + DIMENSIONS: 33"H x 22"W x 15"D





✓ PERFECT FOR:  
-INVENTORY MANAGEMENT/CONTROL  
-INCREASE INVENTORY VISIBILITY

✓ REDUCE SPEND & IMPROVE ACCOUNTING

✓ PROUDLY MADE IN USA 



Part #IC-LC2

- + EFFECTIVE LEAN INVENTORY MANAGEMENT
- + INTEGRATED LED LIGHTING
- + DIMENSIONS: L24" x W36" x H78"
- Acro-Bins NOT Included

**\*CUSTOM BUILD ONLY**  
**IC** Inventory Control Solutions

AUDIT CAPABLE LOCK



Part #IC-MC2

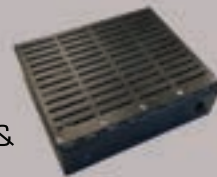
- + MOBILIZE YOUR INVENTORY SYSTEM
- + DIMENSIONS: L24" x W36" x H42"
- Acro-Bins NOT Included

**LC2 and MC2**  
**Available Accessories:**

**Bluetooth Box**

Part # IC-BTB

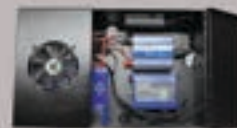
Optional Bluetooth Controller &  
Cables for Lock Interface



**Auxiliary Power Box**

Part # IC-AUX

Optional: To Power Mobile Inventory  
Control Cabinet







### **Productivity**

Increase productivity, accuracy, and efficiency throughout your departments with our expertly designed carts. We build best in class "point of use" carts and solutions!

### **Mobility**

Eliminate wasted movement in your shop! Streamline your departments by giving your techs 95% of their tools and materials right where they need them in a truly mobile solution.

### **Control**

We believe in a "closed system." If you can't lock it you can't control it! Our carts allow you to control access to valuable equipment and materials. Increase accountability and manage inventory!

### ***INDUSTRIES SERVED:***

Our products transcend a variety of vertical markets. Look for Goliath products in Aerospace, Military, Industrial, Gas & Oil, Manufacturing, Mining, and other industries that require rugged, durable products!

### **Contact Info:**

Goliath Carts, LLC  
PO Box 891210  
Temecula, CA 92589-1210

Toll Free: 866.694.2278  
[www.GOLIATHCARTS.com](http://www.GOLIATHCARTS.com)  
[info@goliathcarts.com](mailto:info@goliathcarts.com)

### **Common Uses:**

Mobile Estimating  
ADAS  
Blueprinting  
Vehicle Dollies  
Paint Prep Management  
Parts Management  
Inventory Control  
Point of Use Carts  
Secure Series Cabinets

***At Goliath Carts we are  
Committed to Developing  
Products that Help you  
Improve!***



ACCREDITED  
BUSINESS

BBB Rating: A+