



## SOLUTIONS FOR WORKING SMARTER

Phone/Fax: (866) 694-2278  
info@goliathcarts.com

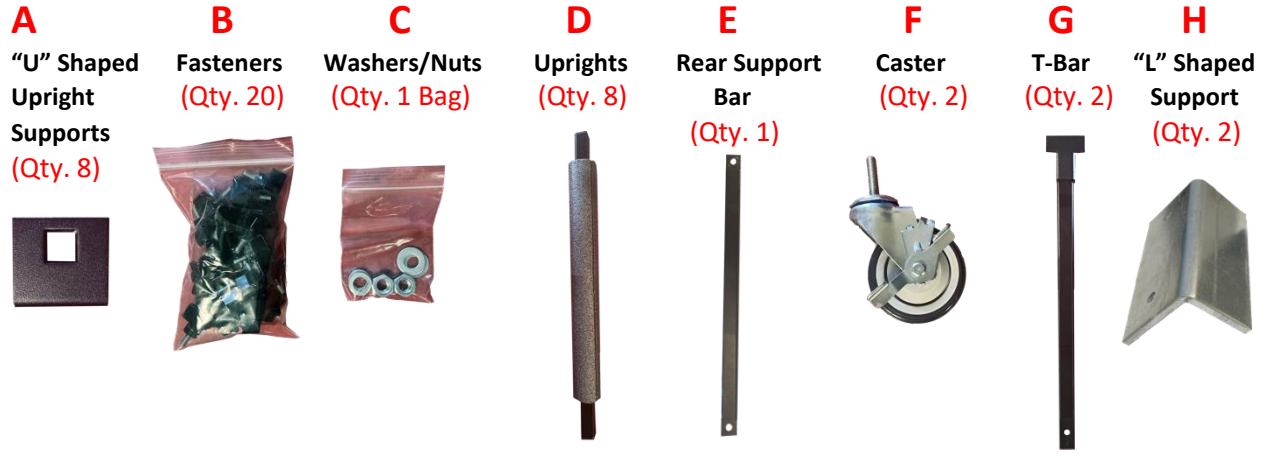
GOLIATHCARTS.com

GOLIATH CARTS, LLC

P.O. Box 891210  
Temecula, CA 92589

### Panel Cart Assembly

#### Item Key:

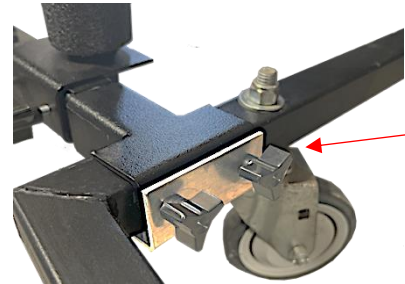


**Step 1:** Place the casters (F) in holes on the rear of each T-Bar (G).

**Step 2:** Set the rear support bar (E) on the top of T-Bars (G) and secure using the threaded post on each caster (F) and all provided nuts/washers (C).



**Step 3:** Attach the two T-Bars (G) to the back of your PR1-A Parts Cart. Secure one "L" shaped support (H) on each T-Bar (G) to the back of the Parts Carts using 4 fasteners (B) to hold them in place.



**Step 4:** Add 4 uprights (D) on to each T-Bar (G) using the 8 "U" shaped upright supports (A) and remaining 16 fasteners (B). Your Panel Cart assembly is now complete.

Phone/Fax: (866) 694-2278  
Email: info@goliathcarts.com  
GOLIATHCARTS.com

Goliath Carts, LLC  
P.O. Box 891210  
Temecula, CA 92589